

EXCLUSIVE LISTING | NWC SIGNAL PEAK & KLECK ROADS

Location: NWC of Signal Peak & Kleck Roads, Pinal County, AZ

Size: +/- 106 acres

Price: Submit

Zoning: GR

General Plan: Residential (1-3.5 du/ac)

Utilities: Water - Arizona Water Company
Sewer - TBD

Comments: Property consists of two ownership parcels. The south parcel is +/- 48 acres and the north parcel is +/- 58 acres. The south parcel includes a section line corner.

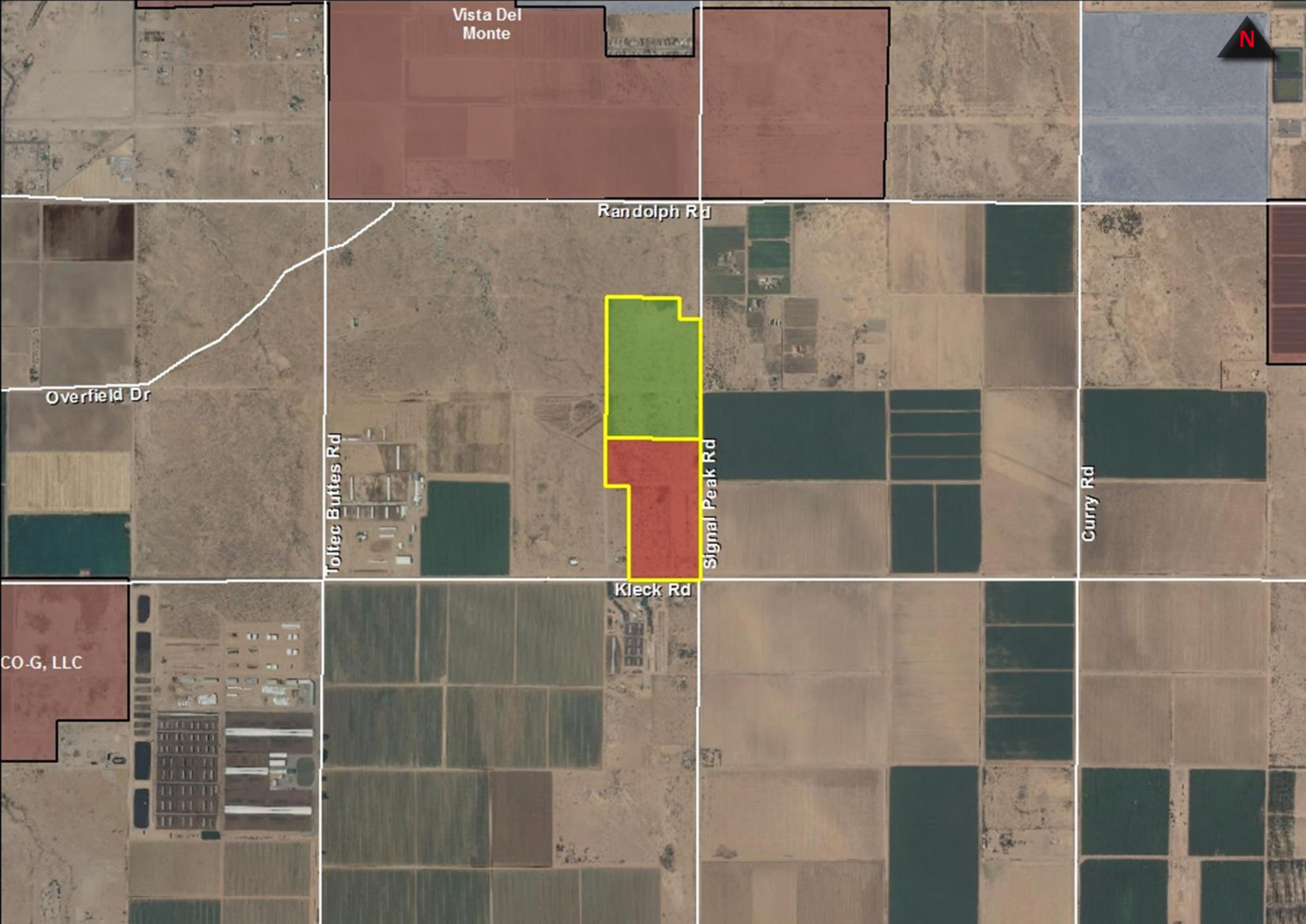
Pinal County Transportation Plan: A full diamond interchange at I10 and Kleck/Korsten is planned and funded, which will extend Kleck from the property to I10.

TLA
THE LAND AGENCY

HOWARD WEINSTEIN
Howard@tlaaz.com
PATTY LAFFERTY
Patty@tlaaz.com

15230 N. 75th Street, Suite 1000
Scottsdale, Arizona 85260
tlaaz.com

The information contained herein is from sources deemed reliable. The Land Agency, nor the Seller, has no reason to doubt its accuracy, but we do not guarantee it. It is the responsibility of the person reviewing this information to independently verify it as factual or not. This package is subject to change, prior sale or complete withdrawal. This is not a binding commitment to buy or sell property.



EXCLUSIVE LISTING | NWC SIGNAL PEAK & KLECK ROADS



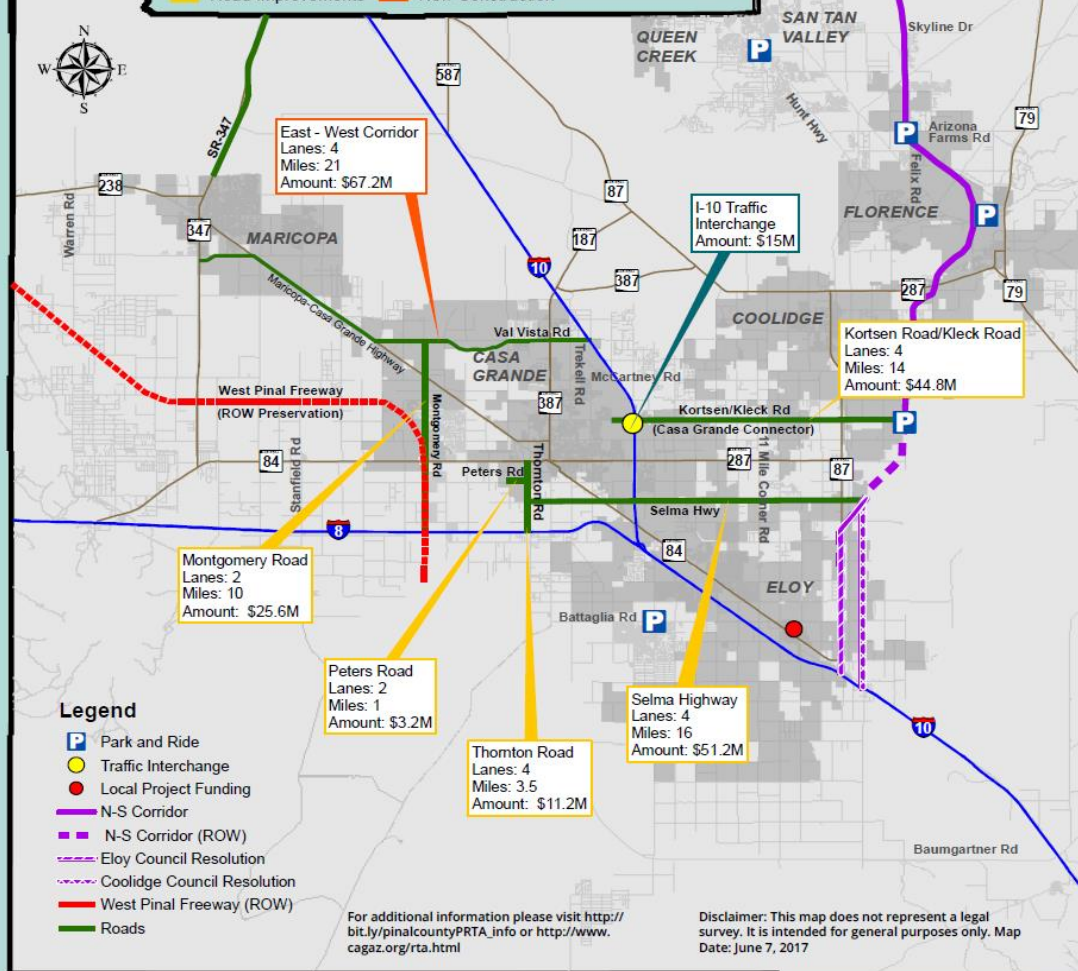
Pinal Regional Transportation Plan

Approved by the Pinal Regional Transportation Authority: June 5, 2017

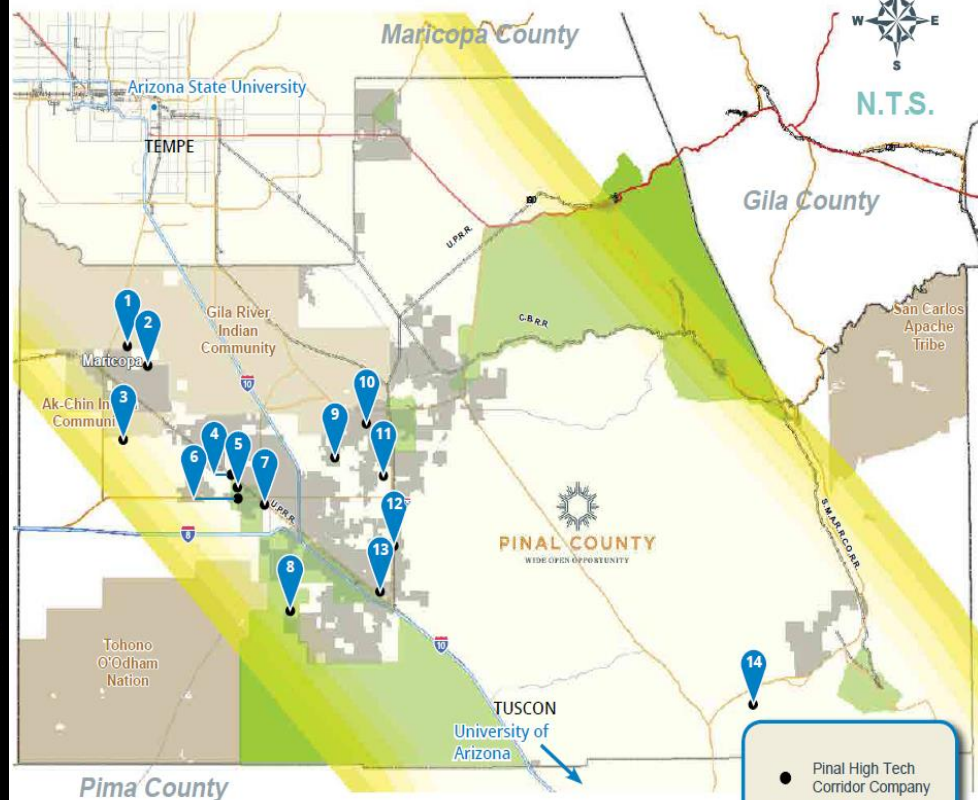


Caption Legend

Road Improvements New Construction



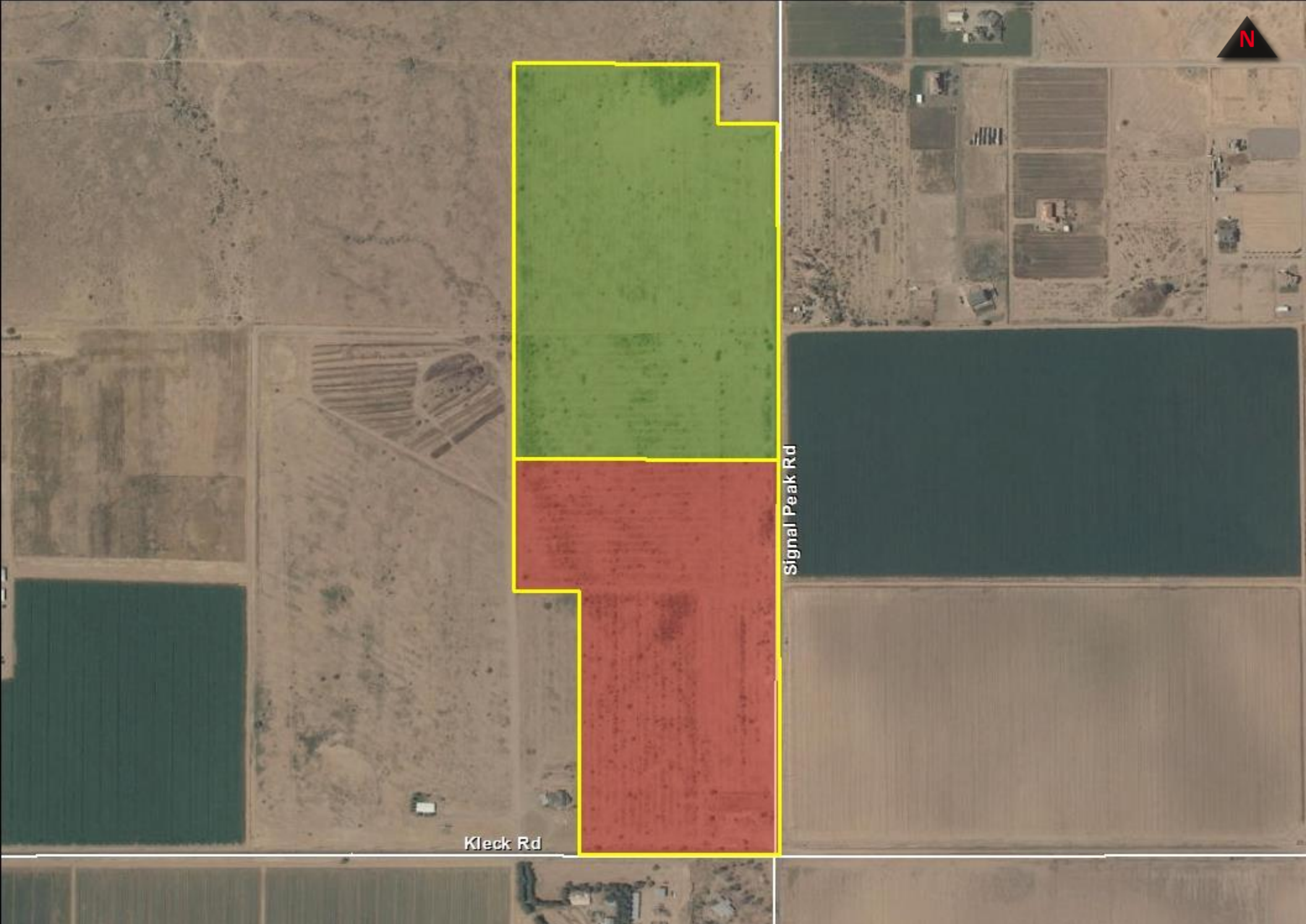
Pinal County High Tech Corridor



1. The University of Arizona College of Agriculture & Life Sciences
2. Volkswagen of America
3. Nissan Technical Center North America - Arizona Testing Center (ATC)
4. Abbott Nutrition
5. Hexcel Corporation
6. Lucid Motors
7. Cargill Animal Nutrition
8. Attesa
9. CNH Industrial
10. Bright International Corp.
11. Heritage Environmental Services
12. Nikola Motors
13. Deltapine Monsanto Co.
14. Biosphere 2

Map Author: BHC Date: 6/6/2019

Location: S:\Engineering\Operations & Technology\Drafting and GIS\GISMaps\EconomicDevelopment\FY18_19\PinalHighTechCorridor\MXD\PinalHighTechCorridor20190516.mxd
Federal Highway Administration, US Department of Transportation, Arizona DOT



Kleck Rd

Signal Peak Rd

N

EXCLUSIVE LISTING | NWC SIGNAL PEAK & KLECK ROADS

TLA
THE LAND AGENCY